

Signal Quality Testing on Network Cable

- Wiremap up to 8 locations at a time with remote kit P.N. TP610 (included)
- Length of cable (TDR) distance to Opens and Shorts
- SKEW
- Channel Response
- Echo Testing (Return Loss)—impedance mismatches
- Signal-to-Noise Ratio
 - Attenuation
 - Amplitude
 - Return Loss
 - NEXT—all combinations on all pairs (12)

Performance and Speed Certification

- Supports IEEE802.3 speed criteria up to 1 gigabit with full Bit Error Rate Test (BERT)
- Test interconnect specifications per TIA568/570
- Measures the quality of the signal through the cable against set criteria on cable data-carrying capability in real time. 100Mbit/gigabit speeds
- Real-time testing of the performance capability of the cable qualifies VoIP lines
- Measures signal quality in actual link environments that could account for cable inadequacies. Physical installation, kink, loops etc., physical terminations, dry shorts, miswires etc.



patent pending

Active Network Capabilities

Port Services—Detects:

- Any voltages on the port and classifies it as phone, legacy phantom power over Ethernet or unknown
- Ethernet equipment and displays advertised speeds, actual linked speed, hub/switch-NIC-auto, signal-to-noise ratio (100 MB & 1G), timing skew (1G) and crystal frequency error between NT and other device
- Cable not terminated at other end, reporting length of each pair and any shorts, split-pairs or opens in the cable
- Cable test results on Validator-NT™ remote end

Ping Testing

- Manual or DHCP modes supported
- Pings up to four manually-entered ping target addresses in dotted-quad or URL formats plus a DNS server, router/gateway and default internet address
- Reports number of packets sent and received and last response time

Hub Flash

- Flashes hub/switch's link indicator to locate link with Validator-NT™ connected to it

Operating Specifications

- **Display** 256 color back-lit LCD
- **Power Source** AC adapter/lithium-ion rechargeable batteries
- **Interfaces** USB port for uploading/downloading files to/from a laptop/PC
- **Operating System** Linux
- **Keypad** Full navigation set with easy alphanumeric data entry and soft key functions

Specifications subject to change.

Physical Characteristics

Physical Dimensions

- **Main Unit**
 - Size: 22.9 x 11.4 x 5.3 cm (9 x 4.5 x 2.1 inches)
 - Weight: 710 grams (1 lb 9 oz.) with battery
- **Remote**
 - Size: 14.2 x 11.2 x 4.4 cm (5.6 x 4.4 x 1.8 inches)
 - Weight: 341 grams (12 oz.) with battery

Environmental

- Operating temperature: 0 to 50°C (32 to 122°F)
- Storage temperature: -20 to 70°C (-4 to 158°F)
- Humidity: 10% to 85%, non-condensing

Interfaces

- USB cable assembly
- Compact flash card (included)

Test Connectors

- 8-position shielded modular jack (data)
- 6-position modular jack (telephone)
- F-coax (video) and dual banana jack (security, speaker, etc.)

Cable Types

- Shielded or unshielded Cat3, 5, 5E, 6
- Telephone, coax, speaker wire, security, fire, and alarm

Battery Type

Rechargeable, removable lithium-ion packs

Maximum cable length for testing for split pairs

Up to 1500 feet, depending upon cable type



shown with optional carrying case (NT935)

Validator-NT™ Kit (NT955) includes

- Validator-NT™ Main Unit and Smart Remote
- 2 lithium-ion rechargeable long-life batteries
- 2 AC adapter/charger units
- 4 adapter cable assemblies
- Set of 8 wiremap remotes
- USB cable assembly
- Compact flash card
- Plan-Um™ design layout software
- Deluxe carrying case with cushioned sides

Ethernet System All-in-One Network Management Tool



- Certifies CAT5, CAT5E and CAT6 Ethernet cables to be IEEE compliant to 1 gigabit speed for all Ethernet systems
- Tests to TIA 568/570 interconnect standards
- Tests coax, telephone, audio, and security cables
- Qualifies VoIP lines
- Powerful Plan-Um™ design software included
- Creates and prints job reports
- Active network capabilities for test, link and identification
- Certify, identify, configure and document your network

Validator-NT™ puts the power of network test and configuration in your hand at an affordable price.

Validator-NT™
The All-in-One Ethernet Network Management Tool

patent pending



Test-Um Inc.
The Intelligent Test Solutions Company

805-383-1500 • FAX 805-383-1595 • www.test-um.com

Define the Job, Make the Tests, Print the Results, Store the Data...



Removable compact flash memory card included

No other tester/certifier does so much, so easily and so economically.

Validator-NT's patented method of uploading and downloading information about cable tests and network configuration will help you gather the necessary information to manage your network easily, while documenting changes, upgrades or new configurations.

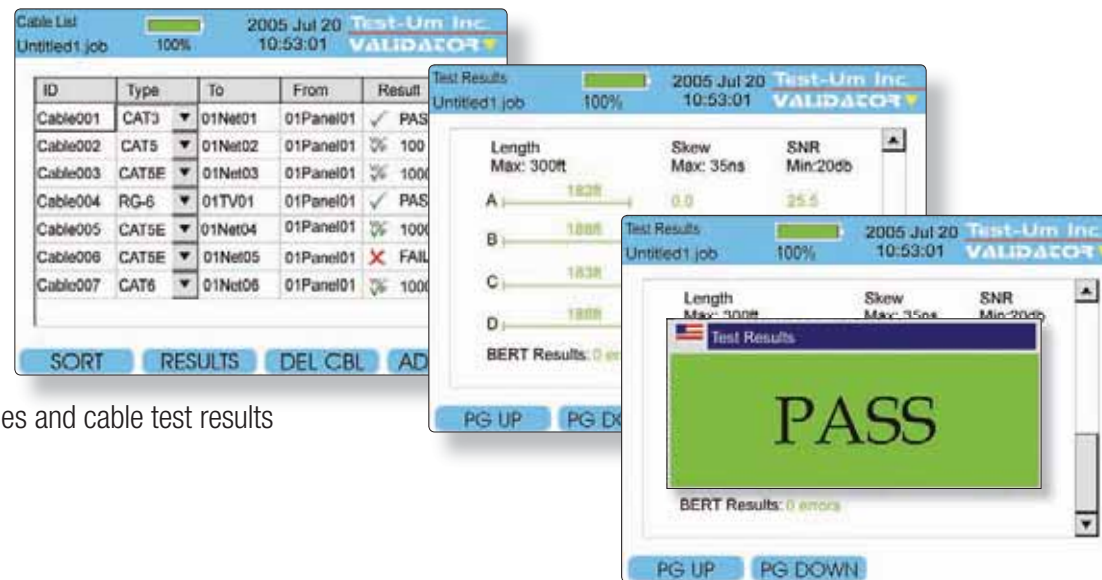
Clear, fast **Speed and Performance Certification** up to 1 Gigabit combines with powerful planning software and active network capabilities to give you the complete tool for installing, managing and fine-tuning any Ethernet network.



dedicated I/O ports for network, telephone, coax and paired cables

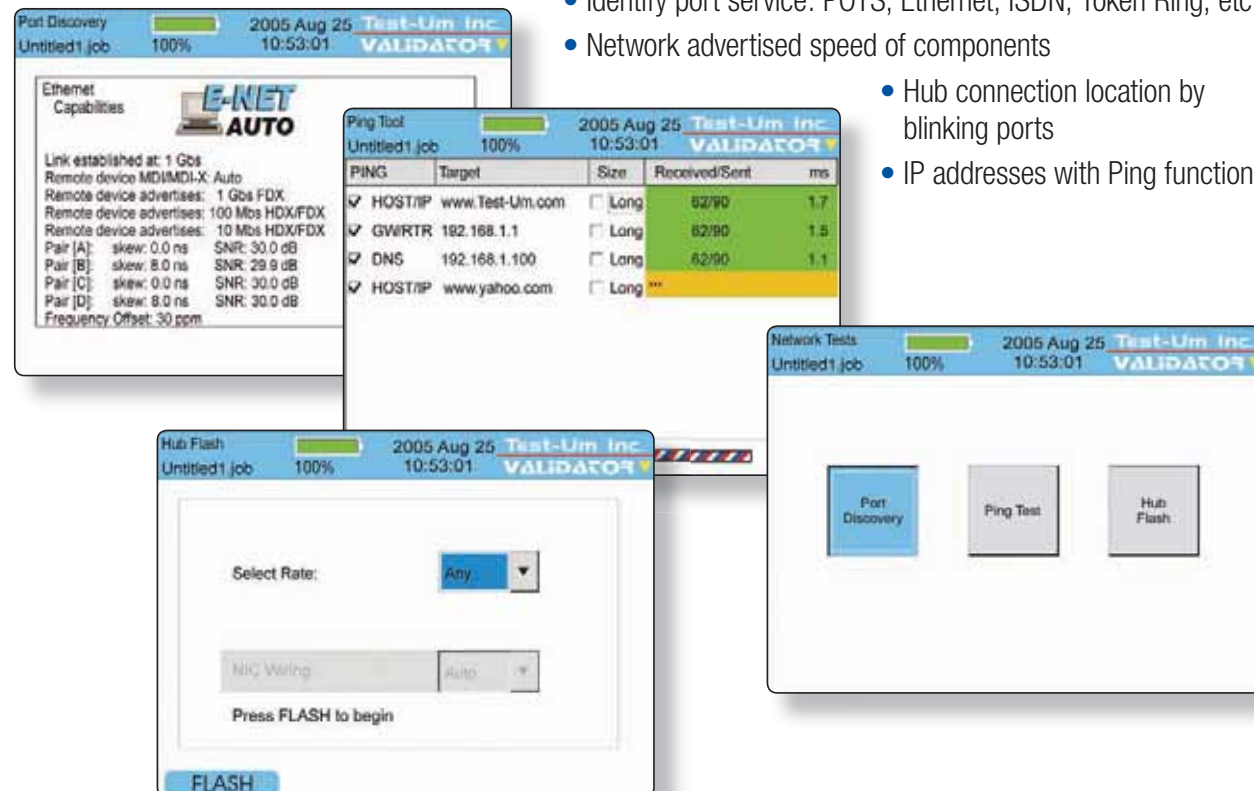
1. Certify

- Certify individual Ethernet cable runs up to 1 Gigabit speed per IEEE802.3 specifications
- Test for TIA568 interconnect problems. Determine fault locations, cable length and delay or noise conditions
- Produce and print cable test schedules and cable test results
- Qualify lines for VoIP usage



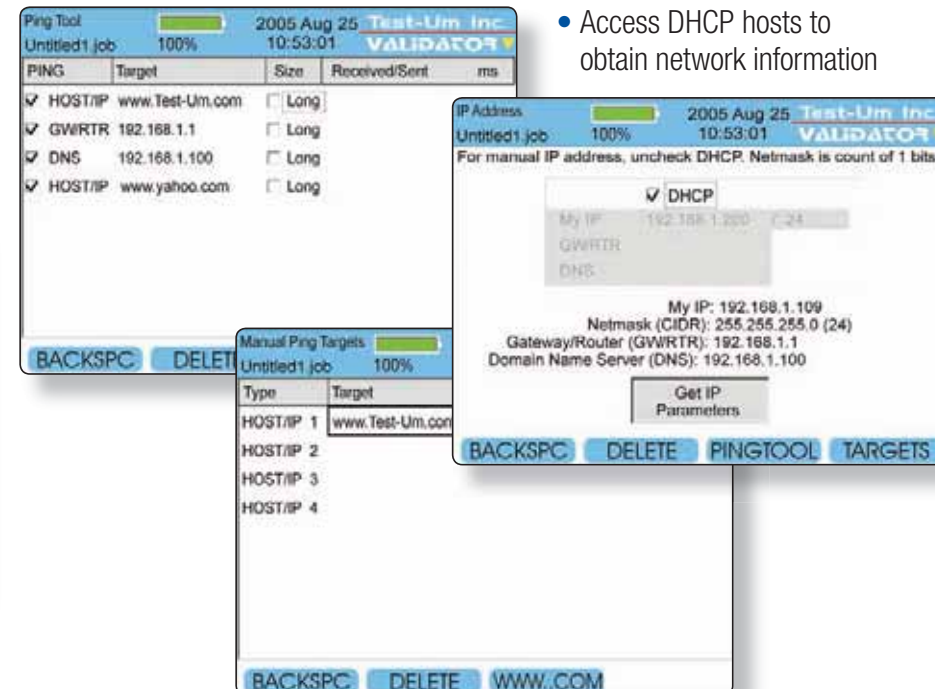
2. Identify

- Hubs, NIC or Auto MDI/MDI-X devices
- Identify port service: POTS, Ethernet, ISDN, Token Ring, etc.
- Network advertised speed of components
- Hub connection location by blinking ports
- IP addresses with Ping function



3. Configure

- Configure links between nodes at Gigabit speed
- Check IP addresses on netmask, Gateway/routers and domain name servers
- Confirm links between equipment for changes or upgrades
- Access DHCP hosts to obtain network information

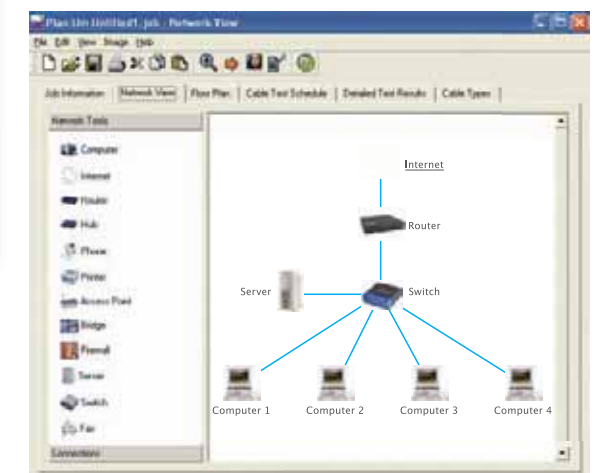


4. Document

- Document the network with the included powerful Plan-Um™ software
- Create layouts of offices/premises or import existing Visio/AutoCAD images
- Show cables and equipment they connect to in physical locations
- Print out layouts and corresponding Cable Test Schedules
- The new Network Tools section of Plan-Um™ allows you to create a complete topology layout of the network for on-site reference, showing connections, equipment and cable pathways. You can add notes to each component of the network for future add, changes, and move legacy information.



Powerful Plan-Um™ software included



Layout of your network components and their connections is easy. Print out topology drawing for site reference or remote work.